



DANA MEDICAL LIBRARY

2021/2022 Annual Report



FROM THE DIRECTOR

We see continuous change in higher education - evolving perspectives and mindsets, as well as shifting resources - against the backdrop of an ever-changing student body. The University of Vermont, as a prestigious academic institution, embodies this by continuing to evolve, enhancing its research enterprise, and expanding support for students. The staff at the Dana Medical Library have spent the last year strategizing and preparing to launch new initiatives in anticipation of these developments. As a result, we've identified pertinent services and resources for our users, while also thinking about how best to reorganize and redistribute work amongst ourselves. In support of the University's research initiative, we purchased new tools such as BioRender and Sage Research Methods, while fully launching our systematic review, academic poster support, and geographic information services. We added two new librarians and two new main desk staff members which has helped us successfully roll out these programs and allows us to continue to identify new ways to support the developing needs of our university and medical center patrons. As we gear up for the future, the staff at Dana are committed to ensuring that we remain dynamic in this shifting higher ed landscape while providing cutting-edge, quality services and resources.



Denise Hersey, Director
Dana Medical Library
University of Vermont Libraries



THE YEAR OF NEW RESOURCES AND TOOLS



In the past year, Dana Medical Library has been working hard to obtain cutting edge online resources that provide the tools and support that researchers need for their work. Here are several that we have recently added to our repertoire.

BioRender

A web application that researchers can use to create scientific figures, diagrams, and illustrations, BioRender includes 40,000 icons and templates from over 30 fields of life science. Simple drag-and-drop functionality allows researchers to quickly create data visualizations of their research.



Sage Research Methods

Sage Research Methods is a collection of books, videos, cases, articles, and more to guide researchers through the entire research process, from getting started to getting published.

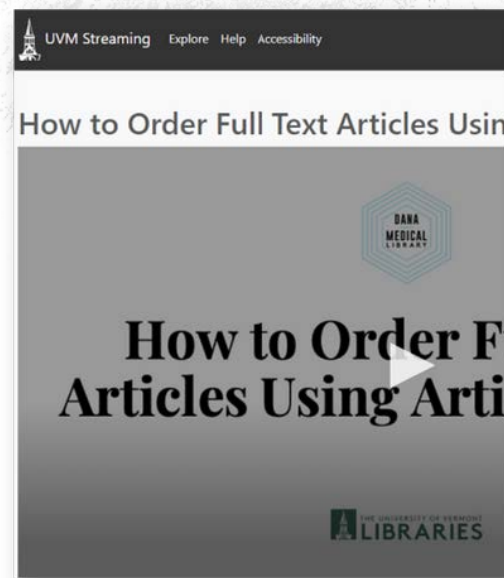


Wiley

UVM Libraries now has an agreement that will provide full-text access to all of the major research publisher Wiley's online journals. It also offers full coverage of Author Processing Charges (APCs) for up to 70 accepted articles by UVM and UVMCC authors annually in the hybrid journal collection. [Learn more.](#)

Article Galaxy Scholar

Integrated into our existing discovery tools, Article Galaxy is a library service that provides Dana patrons access to journal articles. Check out this handy step-by-step video on how to order full text articles through this service.



TeleMedInsights

Lippincott TelemedInsights provides information to help clinicians choose the right technology, make authentic connections with patients, and understand the regulatory issues that affect their practice. This resource provides interactive, self-paced learning modules that provide up-to-date, evidence-based guidance on a number of health-related topics.



STATISTICAL CONSULTING AT DANA



STATISTICS

This past year, UVM Libraries provided a new, high-demand statistical consulting service spearheaded by **Statistical Design and Data Specialist, Maria Sckolnick**. While she is based at Howe Library, she offered both walk-in and by-appointment one-on-one statistical consultations at Dana.



She also led a workshop series called “Random Chats About Statistics” that worked to foster dialogue and assistance around targeted statistical topics. Maria offered help with experimental design, selection of appropriate statistical methodology, assistance with power and sample size calculations, interpretation of results of analyses, assistance in responding to reviewers’ comments, installation/licensing of software packages, and software and programming assistance.

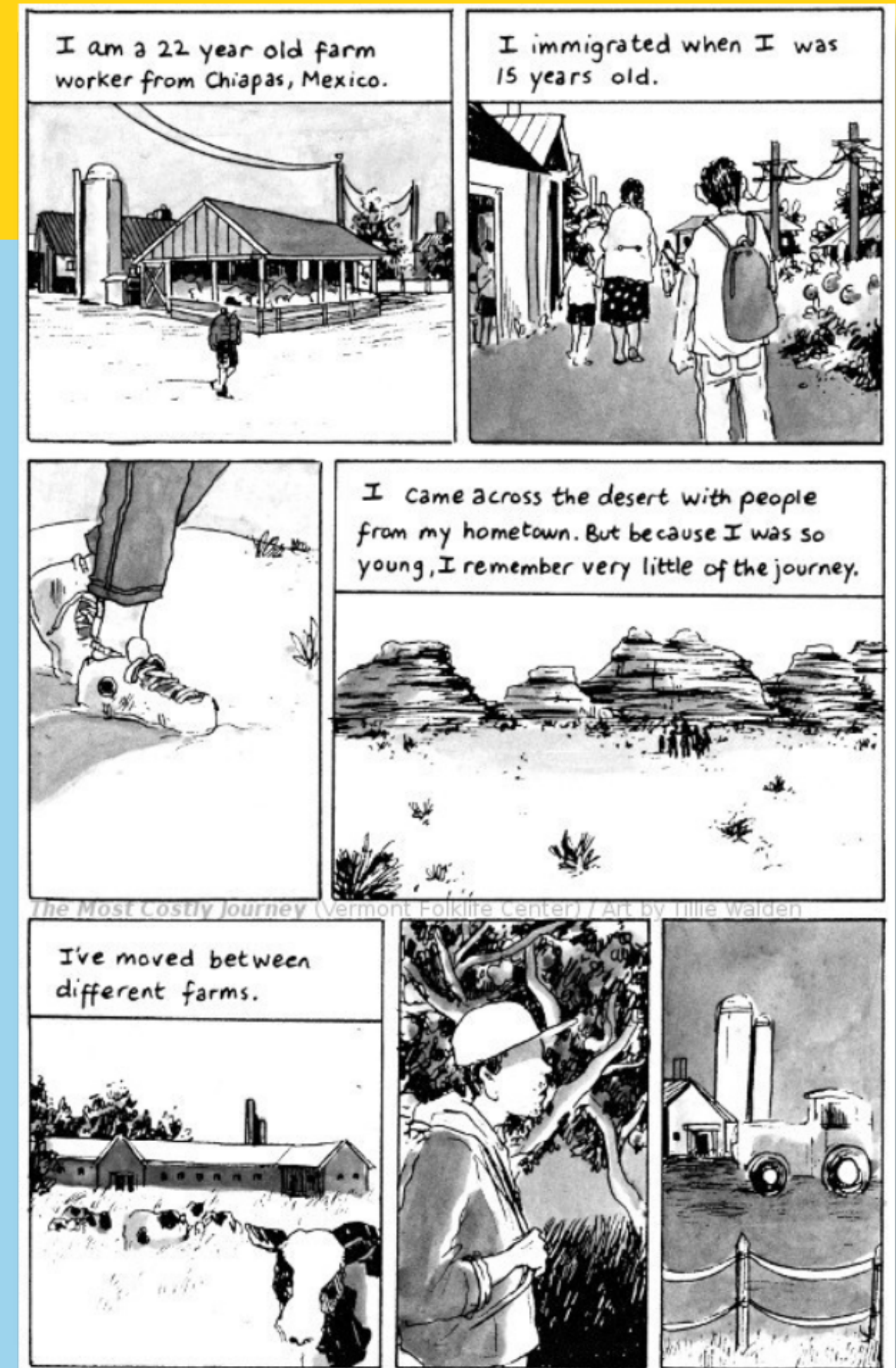
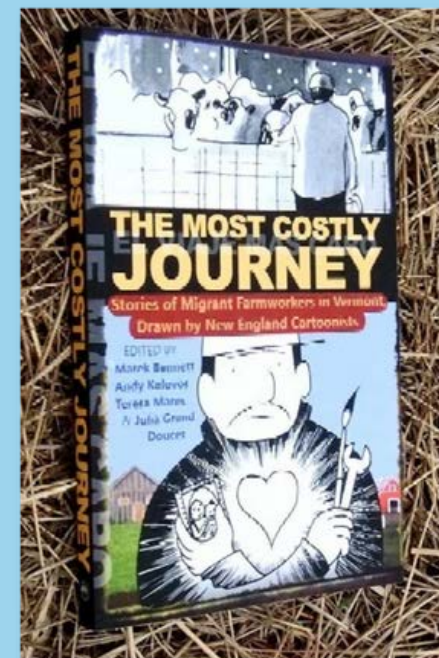
To learn about UVM Libraries’ current statistical consulting services, go to [Statistical Software Support and Consulting Services](#).

VERMONT'S MIGRANT FARM WORKERS: CHRONICLING HEALTH THROUGH STORIES

In early 2022, Dana hosted an exhibit highlighting the graphic novel, *The Most Costly Journey: Stories of Migrant Farmworkers in Vermont*. It also gave an overview of the initiatives that help connect migrant workers to resources in Vermont. [Learn more about the graphic novel](#) and the pamphlets that it is based after. Here are a few details from the exhibit:

There are 1,000-1,200 workers on Vermont dairy farms who have immigrated from Latin America. They do essential work that keeps farms operating year-round, producing milk for the milk, cream, cheese, ice cream and other products that Vermont is known for. Each individual worker has their own story, but as a group, this population faces many physical and mental health challenges due to the nature of the work, difficult migration journeys, social and cultural isolation, access to health care and language barriers. An estimated 90% of these workers are undocumented, 3% speak English and 5% speak an indigenous language as their first language (not Spanish), 3% have health insurance and 4% have driver's licenses. To say the least, these individuals face monumental barriers to accessing needed resources.

The health outreach program, [Bridges to Health](#), empowers farmworkers to make timely health decisions and offers care coordination. They create capacity-building opportunities for local health entities to implement linguistically and culturally appropriate services. "This past year, UVM Extension coordinated vaccinations in 13 of Vermont's 14 counties, partnering with local health services and using a combination of on-farm clinics, state-sponsored clinics, BIPOC clinics and pharmacy appointments. They reached about 900 people." [VPR – How Vermont Has Vaccinated Its Farm Workers](#). [To learn more](#), visit our digital exhibit.





NEW SERVICES FOR RESEARCHERS

In the past year, Dana has been working on developing services that are relevant and vital to researchers.

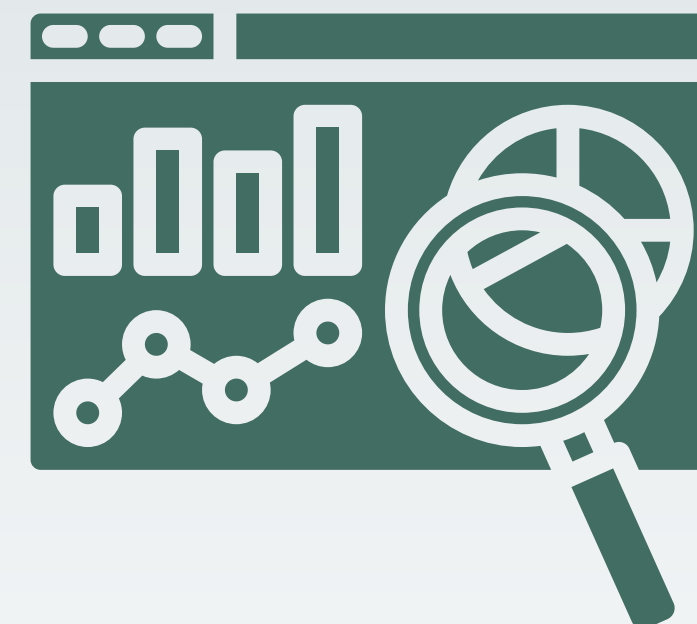


Systematic Review Service

A systematic review works to “identify, appraise and synthesize all the empirical evidence that meets pre-specified eligibility criteria to answer a given research question” (About Cochrane Reviews). Dana now offers both systematic and scoping review support to affiliates of the Larner College of Medicine, College of Nursing and Health Science, and the UVM Medical Center. Learn more about how our librarians can help you with your next review.

Academic Poster Support Service

Dana offers expert assistance with scientific poster planning, design, and presentation. Librarians and staff can walk you through important criteria and steps, as well as offer best practices and tips.



Geographic Information System Service

Geographic Information System, or GIS, is a system that uses geospatial technology to map data. Dana consultants are available to help with GIS project design, the selection of appropriate datasets, and the selection and use of geoprocessing tools, including ArcGIS Pro, ArcGIS Online, and Google Earth Engine.



NEW IN THE LIBRARY

Vending Machines

The library added vending machines to the south study area this past year that are accessible during afterhours study, as well as when the library is open.



Sit/Stand Desks

The library uses regular seat census data to not only count the number of people in the library on any given day, but to indicate what types of seating library users prefer. This data is used to inform new furniture purchases. One of these such purchases were four new ACTIV Sit-to-Stand Desks from AMQ Solutions. After the library's Brody study pods, the adjustable height standing desks are one of the library's most popular study spots. The library provides a chair, which can be pushed under the desk if the station is used in a standing position, giving library users multiple study options. The purchase brings the library to ten of this type of workstation. Check them out today!



Artwork

We have new artwork in the library! In early 2022, we partnered with local Vermont landscape photographer Kevin Armstrong to hang canvas prints of his beautiful photographs on the back wall of our library. The next time that you are in the library, check them out! They are incredible images. [View his work here.](#)



Mobile Power Units

The library has five Steelcase Mobile Power Units for use within the library. Not all library seating has easy access to an outlet and not everyone remembers to bring their charging cables. These new units offer fast and easy charging for center tables, movable modular desks and anywhere else library users can think to sit in the library that doesn't offer a convenient power source.

Units and cables are all day loans, due at closing. Android and iPhone chargers are compatible with the units and available for two hour loan periods.



DANA WELCOMES TWO NEW LIBRARIANS!

Meet Amalia Dolan and Kelli Kauffroath

In early 2022, UVM Libraries conducted a national search for 2 new Research and Instruction Librarians to join our Dana team. We were excited to offer the positions to Amalia Dolan and Kelli Kauffroath.

Amalia Dolan (she/her) started as a Research and Instruction Librarian at Dana on July 1st. She comes from Urbana, Illinois and received her Masters in Library and Information Science from the University of Illinois Urbana-Champaign this past May. While she is new to librarianship, she has extensive experience working in libraries and health research environments. She also spent time with the Peace Corps in Senegal as a Health Extension Volunteer and worked as an AmeriCorps Outreach Coordinator with Family Health/La Clinica in Wautoma, WI. Her experience working in diverse environments paired with a stellar educational track record paves the way for her to jump right into a clinical librarian role at Dana.

She likes reading, the water, puzzles, and exploring. "I'm excited to be here because the work is an intersection of two interests of mine: library science and health and well-being." She looks forward to exploring Vermont, meeting people, and eating lots of creemees.



AMALIA DOLAN

Kelli Kauffroath (she/her) is our most recent addition to Dana Library. Kelli began as a Research and Instruction Librarian at Dana on August 1st and hales from Sacramento, California. She graduated from California State University Sacramento with a BS in Nursing and from San Jose State University with a Master's in Library and Information Science. Most recently, she was a reference and instruction librarian at CSU Sacramento University Library and has solid expertise in educational librarianship, reference and consultation, and collection management, including archival and special collections knowledge. She has demonstrated service and scholarship experience, which will serve her well as a faculty member at UVM, and comes to us with a background in nursing. Kelli was a registered Nurse for 14 years.

Some things that she loves are her family, gardening and being outdoors. "I settled in SoBu where I think I will be very happy and at home. I am a life-long learner and my favorite part about being a librarian is conducting research and working with students, faculty, and staff to facilitate access to information that meets information needs and supports informed decision making. It is great to be here, and I am so excited to begin this new chapter in my life."



**KELLI
KAUFFROATH**

SCHOLARSHIP

Hersey, D., Silkotch C, Burns C, **O'Malley DL**, Ross L. (2021). Choose IR Own Adventure: Re-examining the Purpose and Mission of our Institutional Repository. Northeast Institutional Repository Day (NIRD). <https://doi.org/10.13028/dgwx-z538>
<https://escholarship.umassmed.edu/neirug/2021/program/1> [online oral presentation at a regional meeting]

Leff R, Selvam A, Bernstein R, Wallace L, Hayward A, Agrawal P, **Hersey D**, Ngaruiya C. (2022 Fall) A review of interventions for noncommunicable diseases in humanitarian emergencies in low- and middle-income countries. Am J Disaster Med, 14(4), 297-311. doi: 10.5055/ajdm.2021.0412
PMID: 35325464. <https://pubmed.ncbi.nlm.nih.gov/35325464/>

Ngaruiya C, Berntstein R, Leff R, Wallace L, Agrawal P, Selvam A, **Hersey D**, Hayward A. (2022 June 21). Systematic review on chronic non-communicable disease in disaster settings. BMC Public Health, 22(1), 1234. doi:10.1186/s12889-022-13399-z
PMID: 35729507 Free PMC article. <https://pubmed.ncbi.nlm.nih.gov/35729507/>

Stokes AM. (2022 May) Disruption of Library Services Due to Hospital Cyberattack: A Case Study. Med Ref Serv Q, 41(2), 204-212. doi:10.1080/02763869.2022.2054198



CONTACT US!

dana.uvm.edu

81 Colchester Avenue, Burlington, VT 05405

(802) 656-2200

Main Desk: danacirc@uvm.edu

Reference: danaref@uvm.edu

[Ask Dana](#)

[Ask a Librarian](#)

